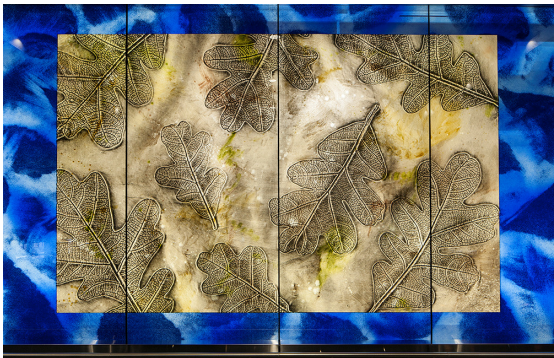


# PHX SKY TRAIN PUBLIC ART PROJECT FACT SHEET

*Trace Elements, 2012*

Daniel Mayer



LOCATION: Terminal 4 Connector Bridges  
SIZE: Two murals, each 115' x 9'  
DESIGN: \$80,000  
CONSTRUCTION: \$1,242,000  
MEDIUM: Stained Glass  
DATE: 2012

Daniel Mayer, a book artist and master printer, was inspired by the intricate beauty of Arizona leaves for the design of his two large-scale glass murals. Integrated into the design and construction of the pedestrian bridges, each mural consists of 28 individual laminated glass panels. Mayer designed the mural in a rhythmic book-page sequence. To create the design, he pressed leaves into aluminum foil with an etching press; then he inked the image to bring out the embossed lines and details. He used a digital program to enlarge the "leaf prints" to the size of the murals. The digital images were screen-printed and hand-painted on glass panels with permanent ceramic glazes, then kiln-fired.

Mayer worked closely with the PHX Sky Train design and construction team of architects HOK, engineers Gannett Fleming, and the Hensel Phelps Construction Company to integrate the design into the station. He collaborated with Franz Mayer (no relation) of Munich, one of the world's leading fabricators of architectural glass and mosaics, to produce the murals. Walters and Wolf installed the glass. Dinter designed the lighting in collaboration with the artist.

This project was commissioned by the Phoenix Office of Arts and Culture Public Art Program with Aviation percent for art funds.

For more information: Rebecca Rothman, Phoenix Office of Arts and Culture Public Art Program 602.495.0893

Photos of completed project: Craig Smith



PHOENIX OFFICE OF ARTS AND CULTURE  
PUBLIC ART PROGRAM

# PHX SKY TRAIN PUBLIC ART PROJECT FACT SHEET

*Variable Order, 2012*

Daniel Mayer



LOCATION: Terminal 4 Station Platform  
SIZE 480' x 40'  
DESIGN: \$35,000  
CONSTRUCTION: \$493,000  
MEDIUM: Terrazzo and aluminum  
DATE: 2012

Daniel Mayer, a book and letter press artist who works and teaches at Arizona State University's Herberger Institute of Design and the Arts School of Art, created a terrazzo floor with more than 1,000 embedded aluminum letters. He chose Garamond italic lower-case typeface for the letters because of its calligraphic elegance. Mayer combined the letters with two, large-scale hand-written phrases which say "timeless is the open" and "limitless is the open." He used a terrazzo aggregate of recycled crushed mirror, blue and clear glass, and abalone shell to give the floor's eight colors added vibrancy, depth and detail.

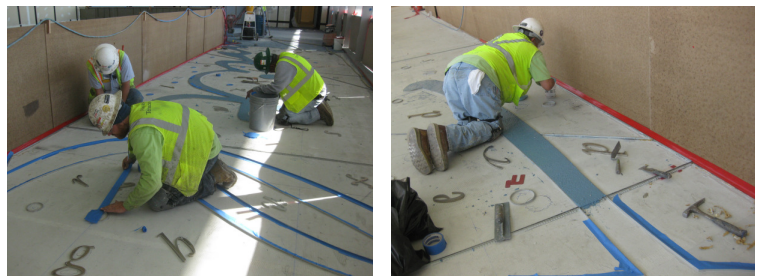


Mayer worked closely with the PHX Sky Train design and construction team of architects HOK, engineers Gannett Fleming, and the Hensel Phelps Construction Company to integrate the design into the station. The floor was produced by 25 skilled workers from Advance Terrazzo, in Phoenix.

This project was commissioned by the Phoenix Office of Arts and Culture Public Art Program with Aviation percent-for-art funds.



For more information: Rebecca Rothman, Phoenix Office of Arts and Culture Public Art Program 602.495.0893



Photos of completed project: Bill Timmerman



PHOENIX OFFICE OF ARTS AND CULTURE  
PUBLIC ART PROGRAM